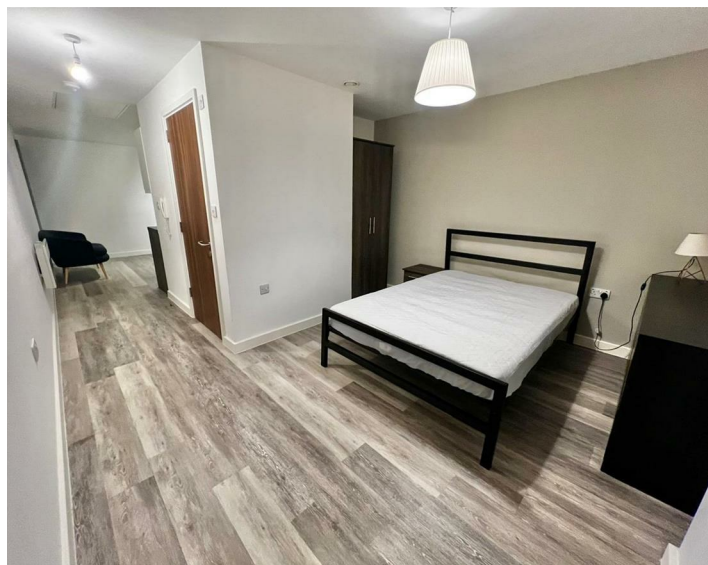


Apt 88 4 Leigh Street, Liverpool, L1 1NT
£700 PCM

www.
cityresidential
.co.uk



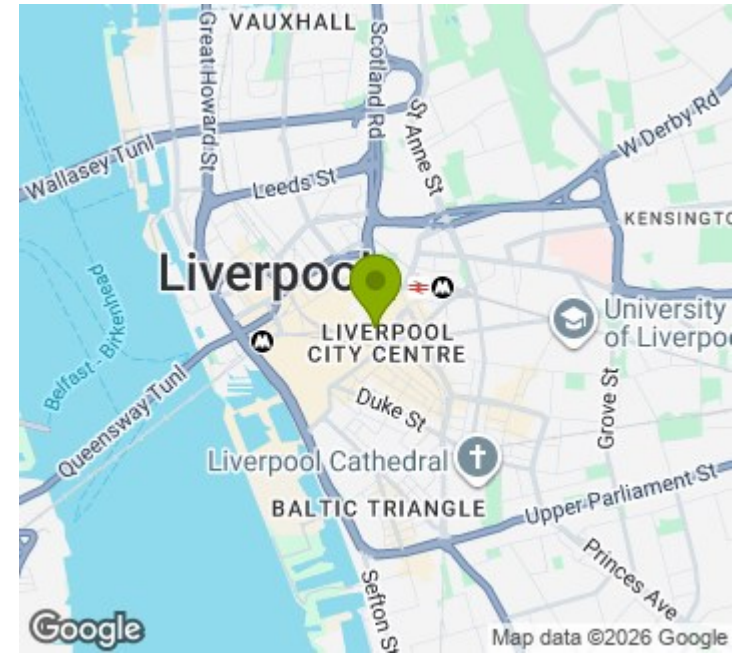
About the Property

AVAILABLE NOW is this well presented seventh floor, studio apartment in the heart of Liverpool City Centre. Situated on Leigh Street, it is ideally located for all the amenities the city centre has to offer and is just a short walk from both Liverpool Central and Liverpool Lime Street Stations. The accommodation further benefits from double glazing and integrated white goods in the kitchen.

This development is serviced by a lift to all floors and there is no parking available with this apartment.

EPC Rating - C. Council Tax Band - A. A deposit amount of £807 is payable upon moving in. Call us now on 0151 231 6100 to arrange a viewing.

- Immediate Move In
- EPC - C
- Council Tax Band - A
- Deposit - £807
- No Parking
- Head lease restriction: no pets



Energy Efficiency Rating

	Current	Potential
Very energy efficient - lower running costs		
(92 plus) A		
(81-91) B		
(69-80) C	75	75
(55-68) D		
(39-54) E		
(21-38) F		
(1-20) G		
Not energy efficient - higher running costs		
England & Wales	EU Directive 2002/91/EC	



City Residential

81/87 Victoria Street, The Old Haymarket, Liverpool L1 6DG

T: 0151 231 6100 F: 0151 231 6105

E: sales@cityresidential.co.uk



WWW.
cityresidential
.co.uk